

YEAR 7

September

July

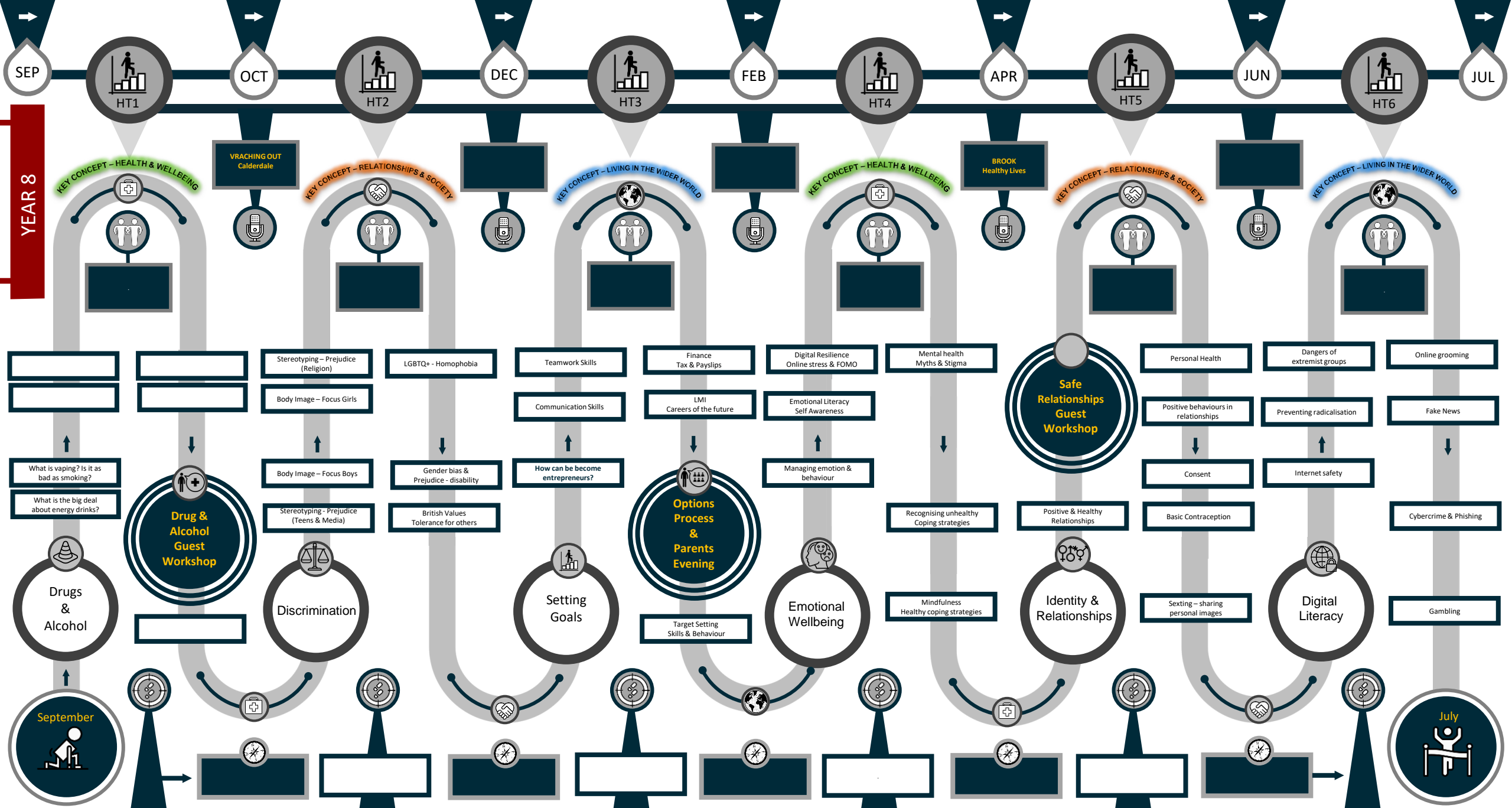
Y7 PERSONAL DEVELOPMENT CURRICULUM AND CO-CURRICULUM [PROGRESSIVE MODEL - SEQUENCING & THRESHOLD CONCEPTS]

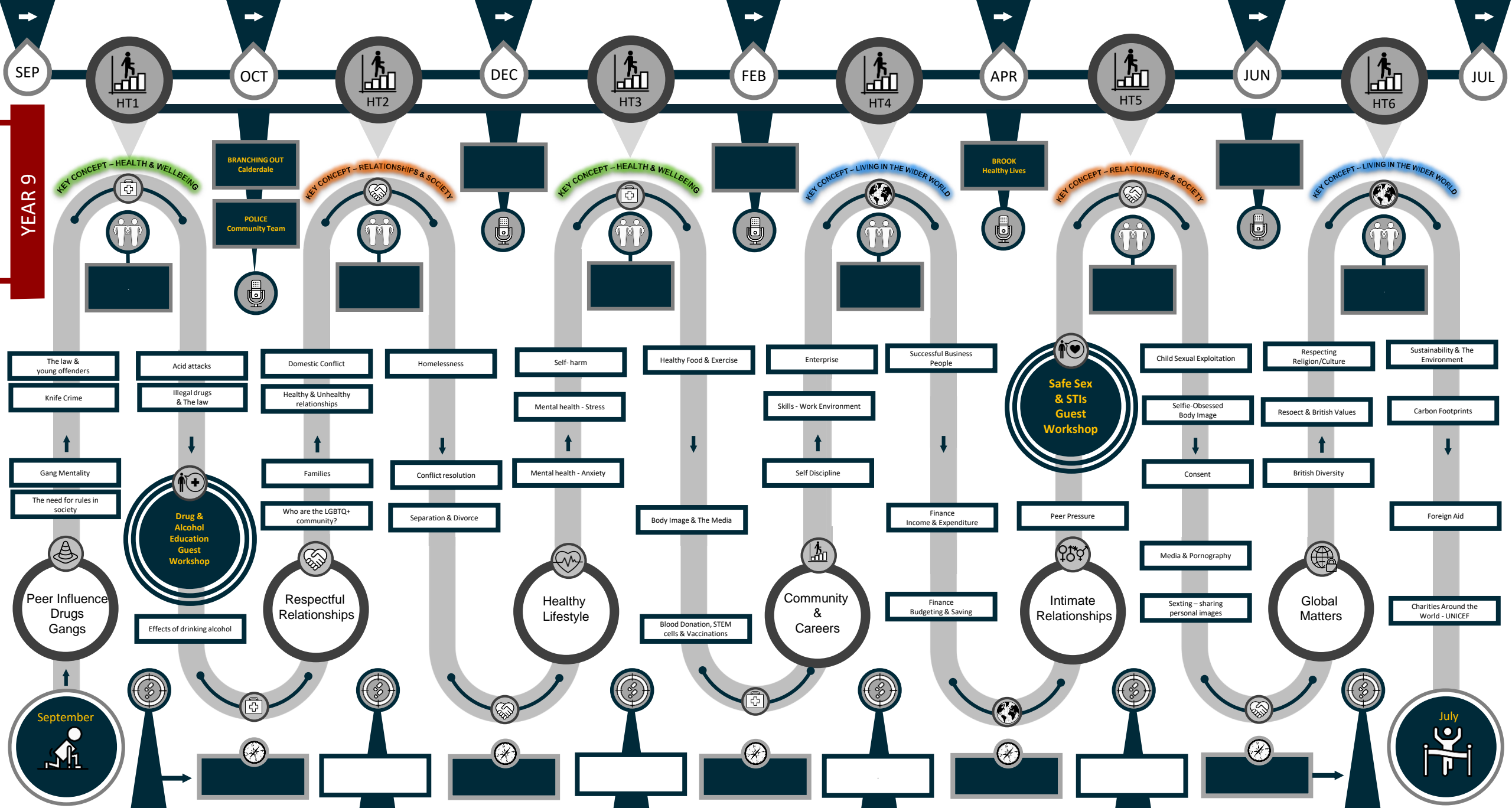
- Healthy Lifestyles**
 - Emergencies & First Aid
 - Personal Safety (Travel)
 - Homework & School Routines
- Health Food & Nutrition**
 - Health Exercise
 - Mental Health Awareness
- Being an Aspirational Student**
 - Resilience
 - Self Confidence & Achievement
 - The Importance of Self Esteem
- Diversity**
 - Stereotyping & Prejudice Racism
 - Stereotyping & Prejudice Disability
 - Bullying Incl. Online
- Managing Emotions**
 - Personal Hygiene
 - Puberty & Periods
 - Health & Puberty
- The Dangers of Cigarettes, Alcohol & Drugs**
 - Appropriate contact & attention
 - FGM
- Enterprise - Logo Design**
 - Enterprise - Sales itch
 - Enterprise - Making a profit
 - Introduction to Unifrog
 - Logging Competencies on Unifrog
 - Enterprise Activities
 - Careers & Enterprise
- Enterprise - House Challenge**
- Enterprise - Making a profit**
- Enterprise - Sales itch**
- Enterprise - Logo Design**
- Enterprise - Making a profit**
- Enterprise - Sales itch**

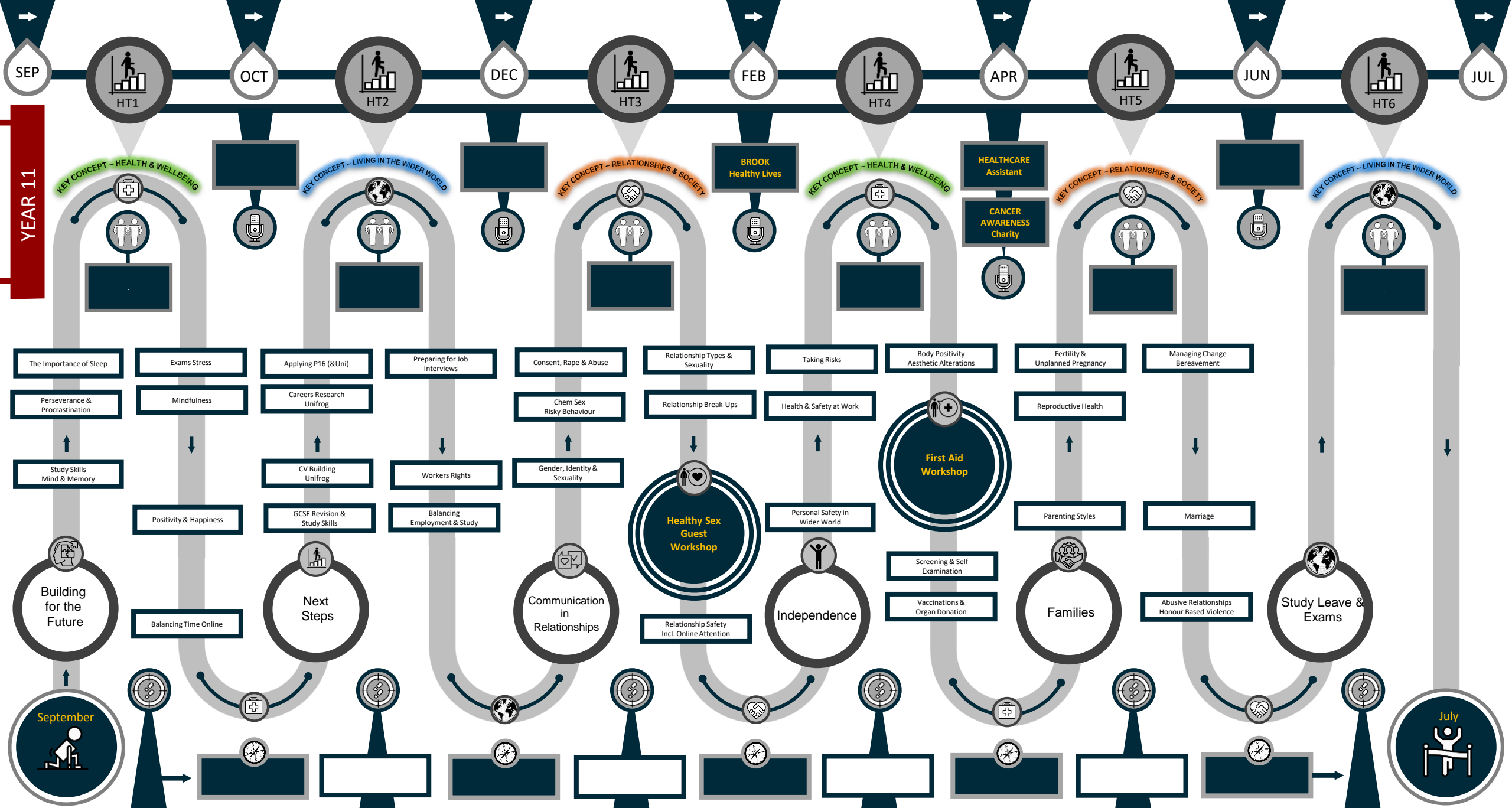
- Transition & Safety**
- Team Building Away Day**
- Developing Aspirations**
- Building Relationships**
 - Safe & Positive Relationships Incl. Online
 - E-Safety & Radicalisation
 - Personal Identity & Diversity
 - Love & Relationships Dealing with new feelings
- British Values**
- Building Relationships**
- Family Relationships**
- Love & Relationships Dealing with new feelings**
- Financial Decision Making**
 - Financial Transactions
 - Financial Products
 - Savings, Loans & Interest
 - Needs & Wants
 - Budgeting
 - Ethical Shopping
 - Creating a Personal Budget Plan
- Bullying & Banter**
- Family Relationships**
- Love & Relationships Dealing with new feelings**
- Financial Decision Making**
- Financial Transactions**
- Financial Products**
- Savings, Loans & Interest**
- Needs & Wants**
- Budgeting**
- Ethical Shopping**
- Creating a Personal Budget Plan**

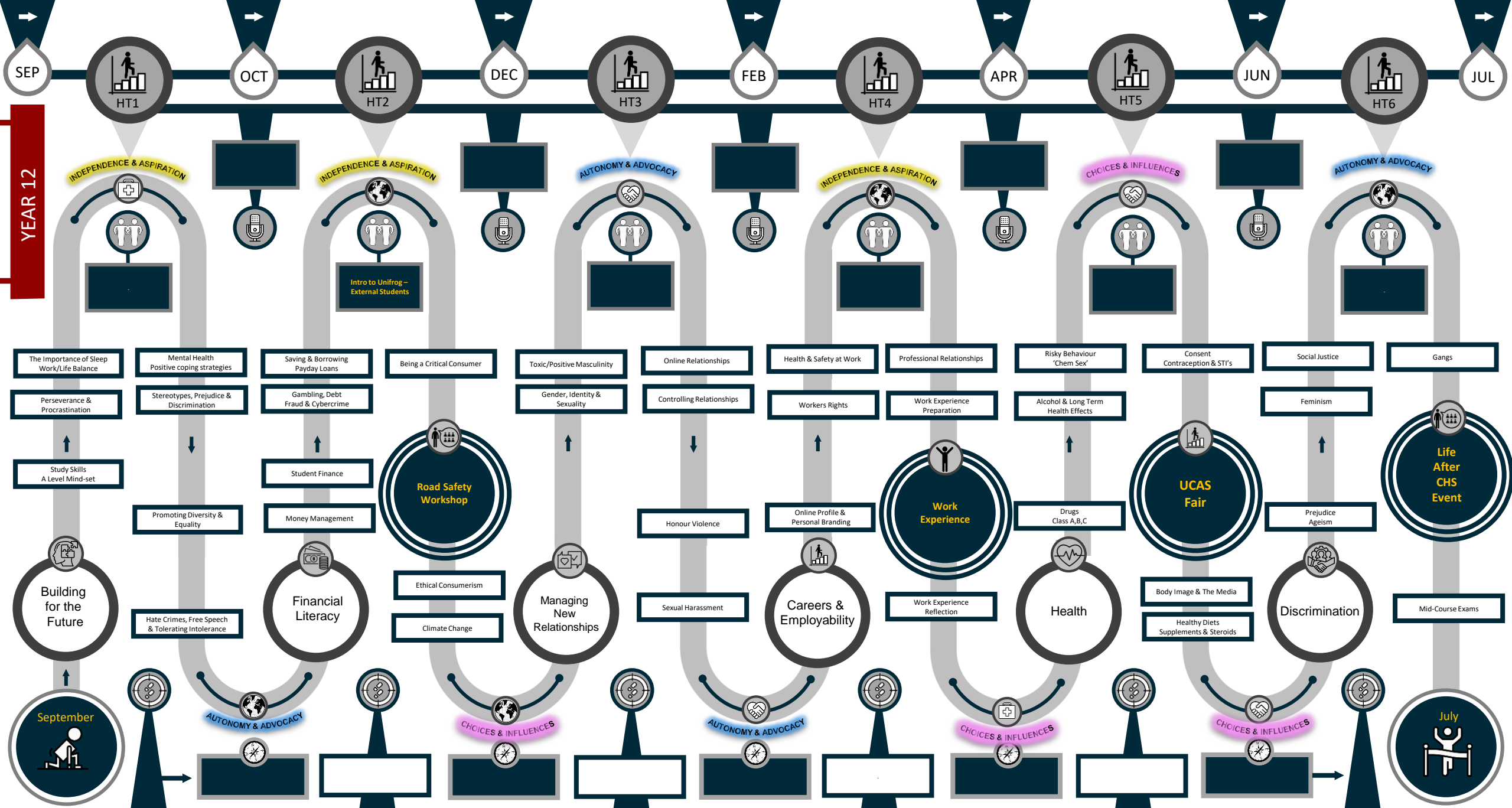
- KEY CONCEPT - HEALTH & WELLBEING**
- MIXENDEN OUTDOOR CENTRE**
- KEY CONCEPT - LIVING IN THE WIDER WORLD**
- TENNER CHALLENGE**
- KEY CONCEPT - LIVING IN THE WIDER WORLD**
- KEY CONCEPT - RELATIONSHIPS & SOCIETY**
- KEY CONCEPT - LIVING IN THE WIDER WORLD**

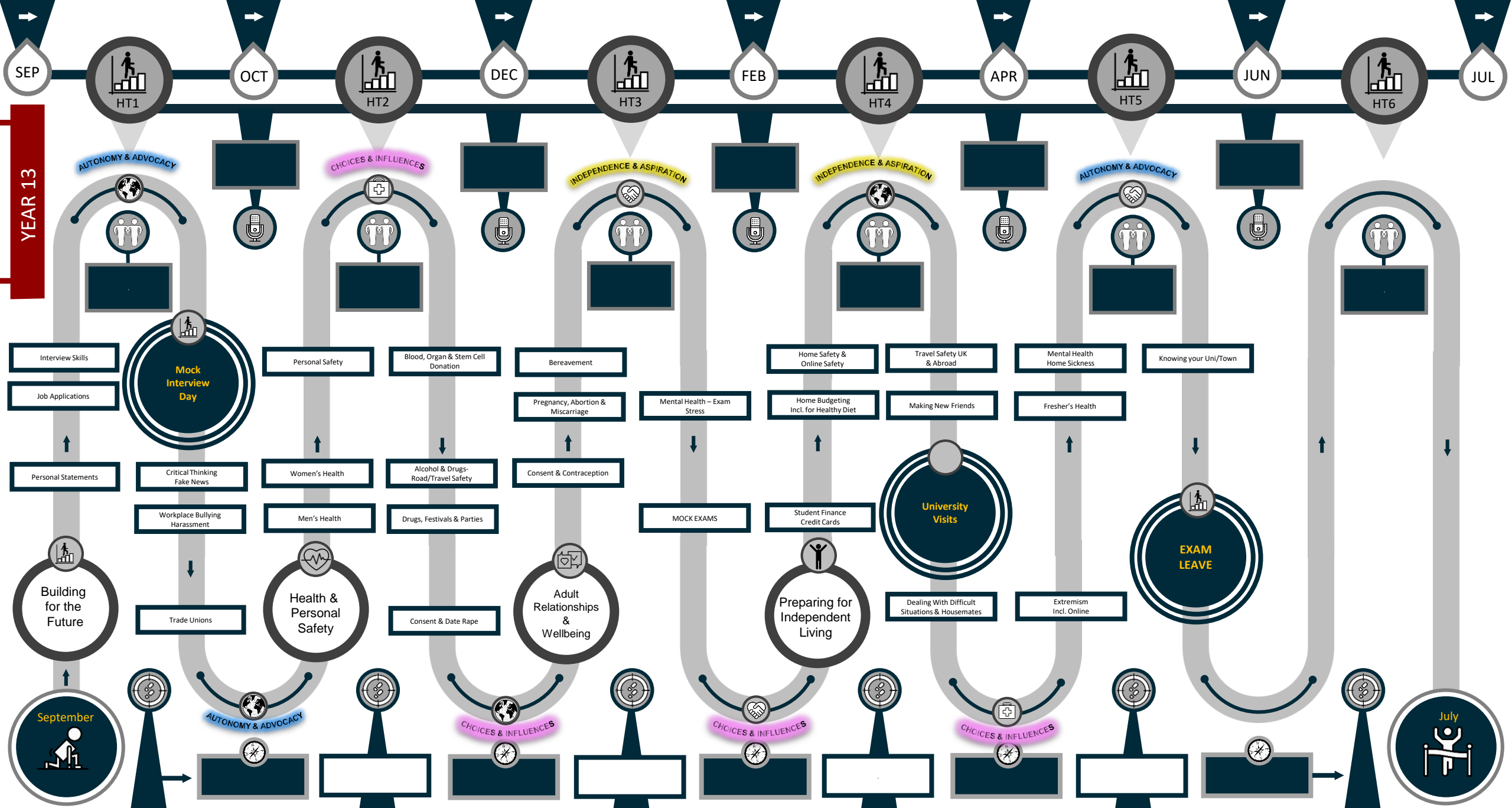
SEP HT1 OCT HT2 DEC HT3 FEB HT4 APR HT5 JUN HT6 JUL











Y13 PERSONAL DEVELOPMENT CURRICULUM AND CO-CURRICULUM [PROGRESSIVE MODEL - SEQUENCING & THRESHOLD CONCEPTS]